

# Social Enterprise in Scotland:

## Key Facts



**6,047**

Social enterprises currently operating in Scotland



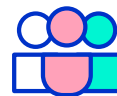
**89,970**

Full-time equivalent employees in the sector



**£2.63bn**

Gross Value Added (GVA) to the Scottish economy



**71%**

Of Scotland's social enterprises are led by women



**33%**

Of social enterprises are located in rural Scotland



**56%**

Of leaders identify their organisation as a social enterprise



**7%**

Of social enterprises have exported within the last 12 months



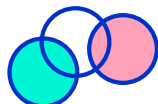
**82%**

Of social enterprises selling direct to consumers



**85%**

Of social enterprises pay at least the living wage to all employees



**77%**

Of social enterprises are incorporated



**15%**

Of social enterprises have won a public contract within the last year



**£4.8bn**

The total annual income of social enterprises in Scotland



**£3.3bn**

The earned income generated from trading activity



**67%**

Self-sufficiency, as a proportion of income covered by trading



**£524m**

In financial surplus generated by the sector



**£7.0bn**

The net worth of Scotland's social enterprises